



2 Gatesheath Drive, Upton  
£535,000





## 2 Gatesheath Drive

Upton, Chester

Situated on a substantial plot in the sought after area of Upton, this three bedroom detached bungalow offers exceptional space, extensive parking and exciting potential.  
Council Tax band: D

Tenure: Freehold

EPC Energy Efficiency Rating: C

EPC Environmental Impact Rating:

- Significant development potential.
- Substantial plot in a sought after area.
- Double Garage with access into the home.
- Sizable Living Room flowing into the airy conservatory.
- Within walking distance of several shops and amenities.
- Three good sized bedrooms.





## 2 Gatesheath Drive

Upton, Chester

Situated on a substantial plot in the sought after area of Upton, this three bedroom detached bungalow offers exceptional space, extensive parking and exciting potential.

Council Tax band: D

Tenure: Freehold

EPC Energy Efficiency Rating: C

EPC Environmental Impact Rating:

- Significant development potential.
- Substantial plot in a sought after area.
- Double Garage with access into the home.
- Sizable Living Room flowing into the airy conservatory.
- Within walking distance of several shops and amenities.
- Three good sized bedrooms.





## 2 Gatesheath Drive

Upton, Chester

Situated on a substantial plot in the sought after area of Upton, this three bedroom detached bungalow offers exceptional space, extensive parking and exciting potential.

Council Tax band: D

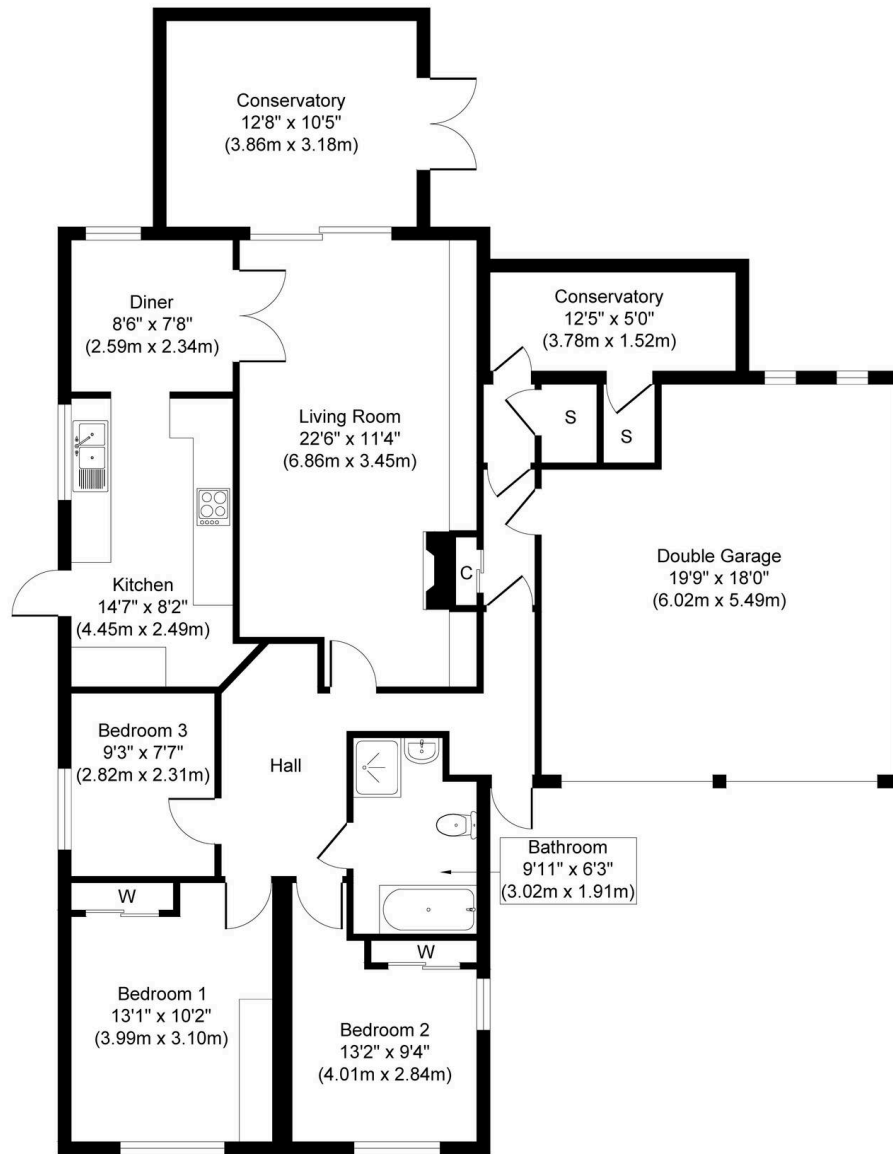
Tenure: Freehold

EPC Energy Efficiency Rating: C

EPC Environmental Impact Rating:

- Significant development potential.
- Substantial plot in a sought after area.
- Double Garage with access into the home.
- Sizable Living Room flowing into the airy conservatory.
- Within walking distance of several shops and amenities.
- Three good sized bedrooms.





**Approximate Floor Area**  
**1569 sq. ft**  
**(145.75 sq. m)**

Whilst every attempt has been made to ensure the accuracy of the floor plan contained here, measurements of doors, windows, rooms and any other items are approximate and no responsibility is taken for any error, omission, or mis-statement. The measurements should not be relied upon for valuation, transaction and/or funding purposes. This plan is for illustrative purposes only and should be used as such by any prospective purchaser or tenant. The services, systems and appliances shown have not been tested and no guarantee as to their operability or efficiency can be given.  
 Copyright V360 Ltd 2026 | www.houseviz.com



## Currans Homes Sales

Currans Homes, 11 Grosvenor Street - CH1 2DD

01244 313900 • [sales@curranshomes.co.uk](mailto:sales@curranshomes.co.uk) • [curranshomes.co.uk/](http://curranshomes.co.uk/)