



9 Coppins Close, Vicars Cross
£320,000



9 Coppins Close

Vicars Cross, Chester

Situated within a quiet cul-de-sac in the ever-popular area of Vicars Cross, this three-bedroom semi-detached home enjoys a pleasant open outlook to the front and a private, south-westerly facing rear garden-making it an ideal choice for a wide range of buyers.

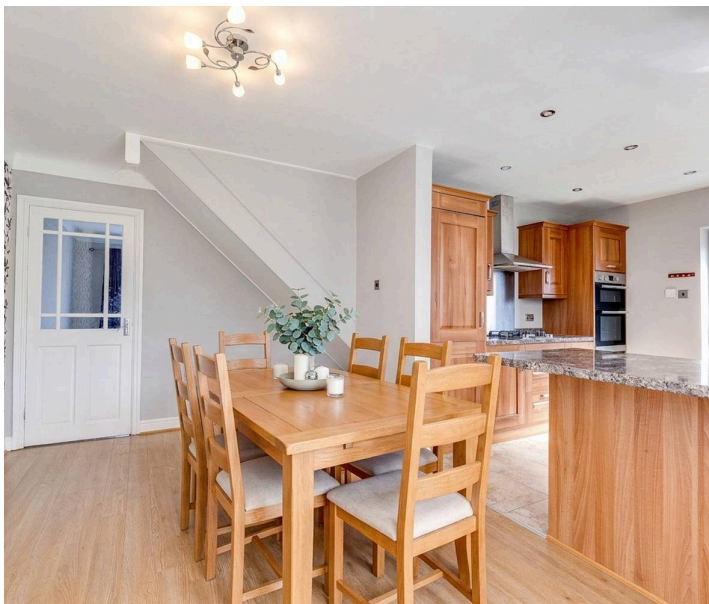
Council Tax band: C

Tenure: Freehold

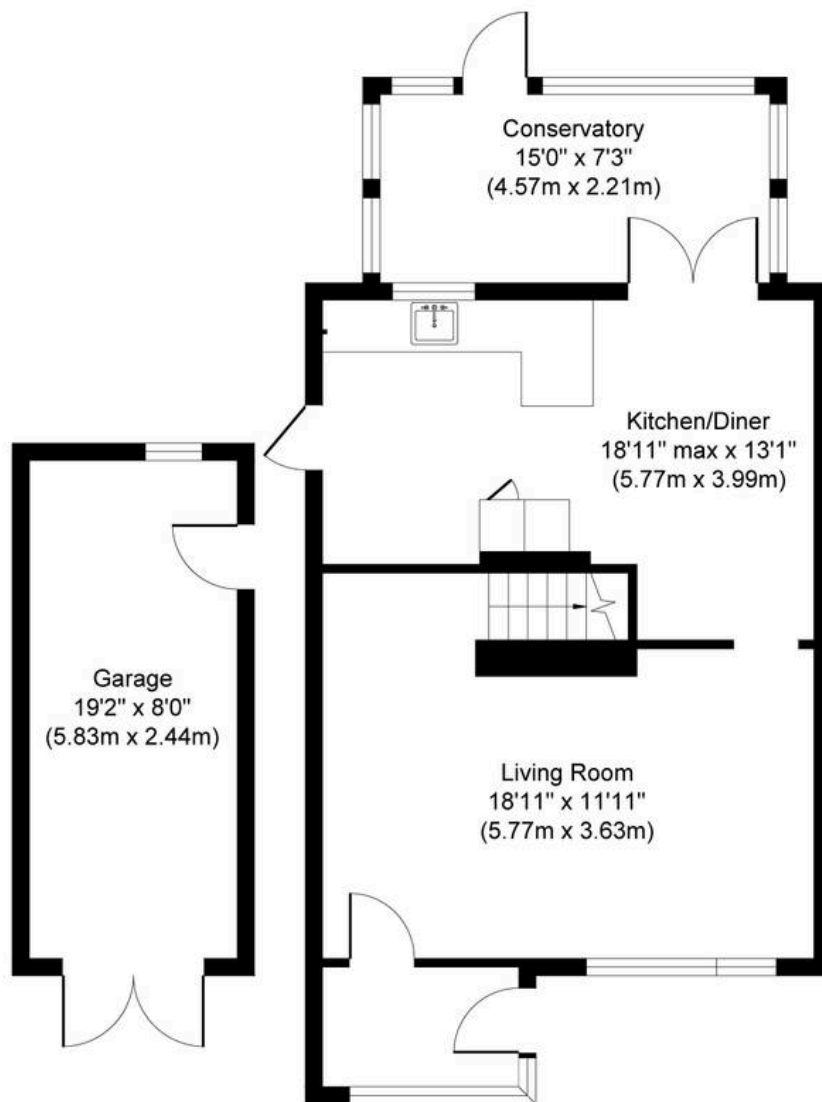
EPC Energy Efficiency Rating: D

EPC Environmental Impact Rating: D

- Immaculately presented throughout, offering a true turnkey, move-in ready home.
- Tastefully decorated in neutral tones throughout, creating a warm and inviting feel.
- Private and beautifully maintained garden, ideal for relaxing or entertaining.
- Convenient off-road parking / driveway.
- Located in a highly sought-after and convenient area, close to local amenities and transport links.

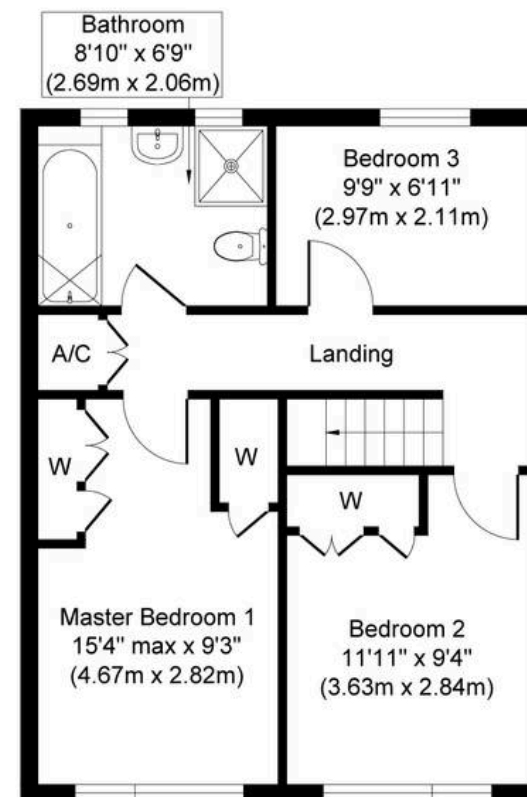






Garage
Approximate Floor Area
153 sq. ft
(14.24 sq. m)

Ground Floor
Approximate Floor Area
635 sq. ft
(59.02 sq. m)



First Floor
Approximate Floor Area
479 sq. ft
(44.52 sq. m)

Whilst every attempt has been made to ensure the accuracy of the floor plan contained here, measurements of doors, windows, rooms and any other items are approximate and no responsibility is taken for any error, omission, or mis-statement. The measurements should not be relied upon for valuation, transaction and/or funding purposes. This plan is for illustrative purposes only and should be used as such by any prospective purchaser or tenant. The services, systems and appliances shown have not been tested and no guarantee as to their operability or efficiency can be given.



Currans Homes Sales

Currans Homes, 11 Grosvenor Street - CH1 2DD

01244 313900 • sales@curranshomes.co.uk • curranshomes.co.uk/