



1 Dolphin Court, Chester

In Excess of £285,000



1 Dolphin Court

Chester, Chester

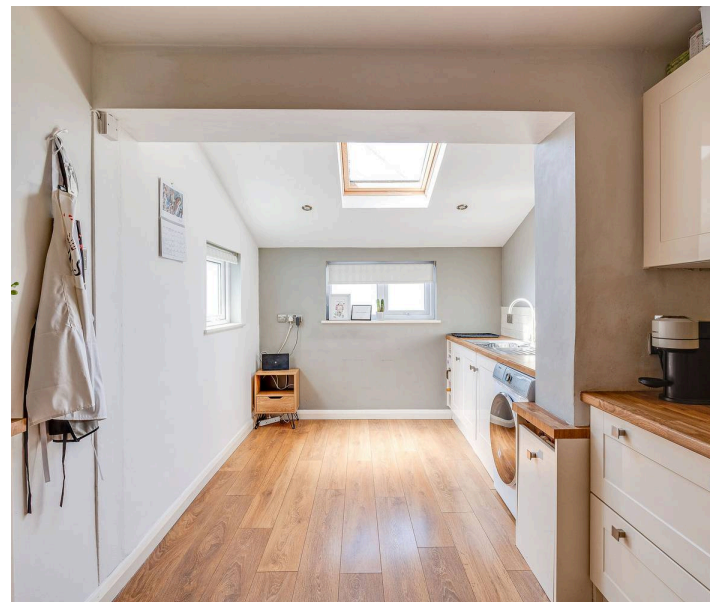
Council Tax band: C

Tenure: Freehold

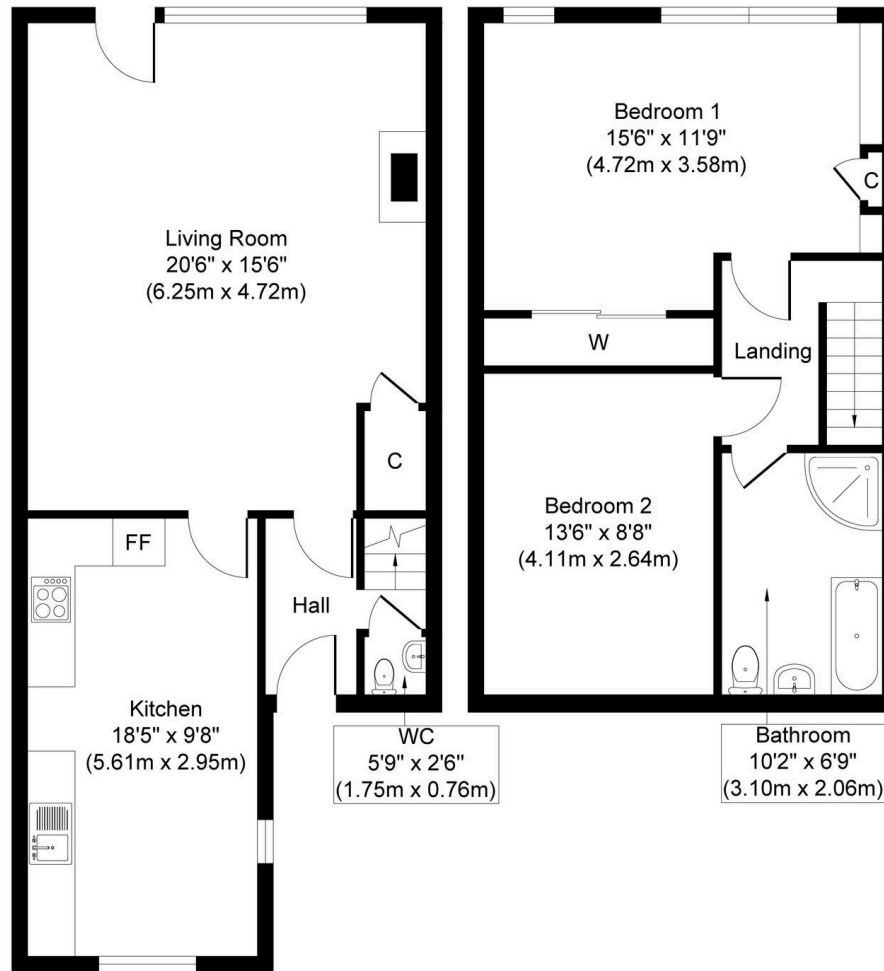
EPC Energy Efficiency Rating: C

EPC Environmental Impact Rating: C

- Tucked away in a private but convenient location close to Chester City Centre.
- Well renovated with extended kitchen space and a stunning media wall.
- No Onwards Chain
- 2 Double Bedrooms with the master bedroom having been 2 rooms merged into one large bedroom.
- Off road parking and separate double garage.
- Private outdoor garden with side gate.







Ground Floor
Approximate Floor Area
580 sq. ft
(53.83 sq. m)

First Floor
Approximate Floor Area
473 sq. ft
(43.96 sq. m)

Whilst every attempt has been made to ensure the accuracy of the floor plan contained here, measurements of doors, windows, rooms and any other items are approximate and no responsibility is taken for any error, omission, or mis-statement. The measurements should not be relied upon for valuation, transaction and/or funding purposes. This plan is for illustrative purposes only and should be used as such by any prospective purchaser or tenant. The services, systems and appliances shown have not been tested and no guarantee as to their operability or efficiency can be given.
 Copyright V360 Ltd 2026 | www.houseviz.com



Currans Homes Sales

Currans Homes, 11 Grosvenor Street - CH1 2DD

01244 313900 • sales@curranshomes.co.uk • curranshomes.co.uk/