



10 Strawberry Close, Farndon  
£499,950



## 10 Strawberry Close

Farndon, Chester

Situated in the highly sought after Cheshire village of Farndon, 10 Strawberry Close is a four bedroom detached family home enjoying a tucked away position within a modern development and outstanding open views across farmland towards the Beeston and Peckforton Hills. Farndon straddles the River Dee, with the neighbouring historic village of Holt just a short walk away, offering excellent village amenities, riverside walks and surrounding countryside.

Council Tax band: E

Tenure: Freehold

EPC Energy Efficiency Rating: B

EPC Environmental Impact Rating: B



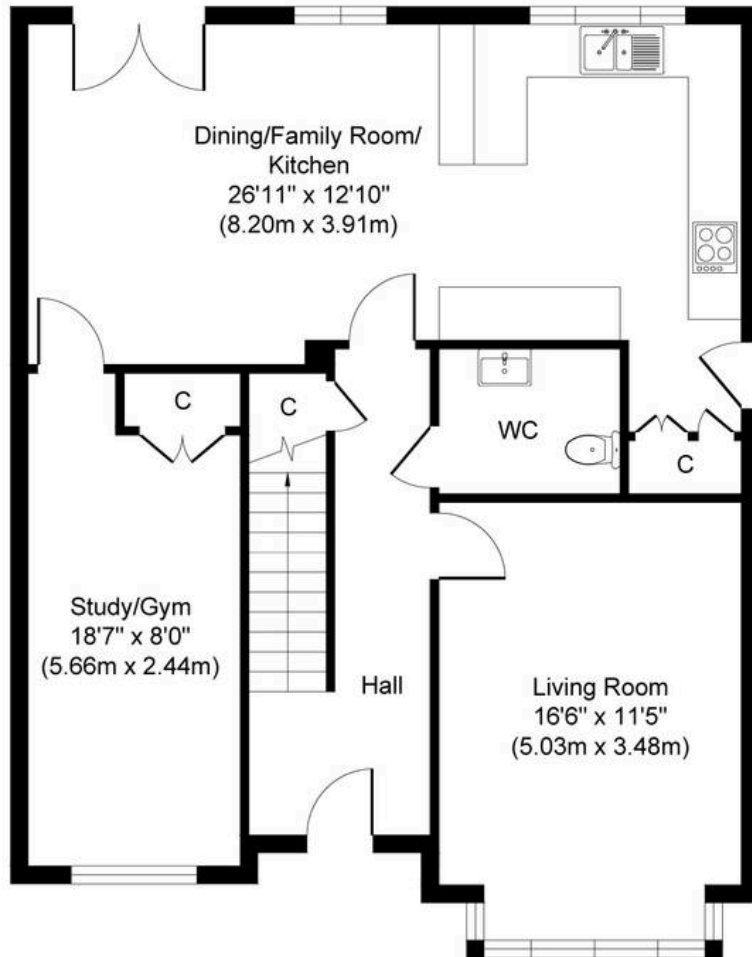


# 10 Strawberry Close

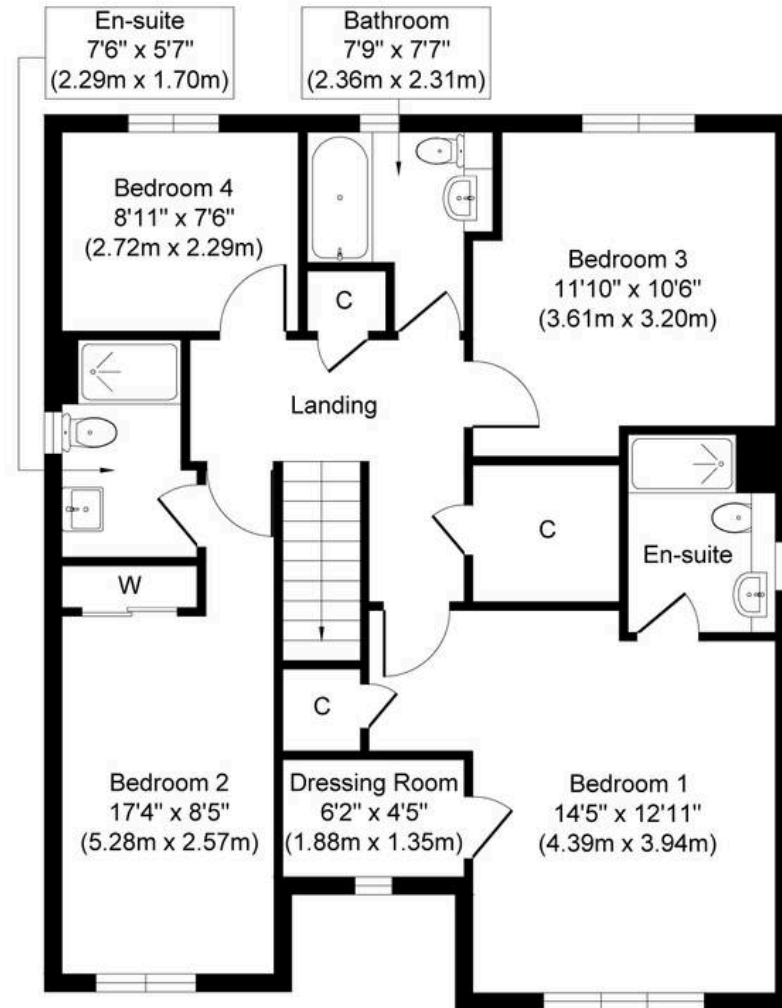
Farndon, Chester

- Immaculately presented detached family home with superb views to the front and a larger than average rear garden which benefits from a westerly aspect
- Garage converted to provide a superb further playroom/gym or large office directly off the dining kitchen
- Over 26ft wide dining/living/kitchen with UPVC double glazed French doors onto the rear patio, useful set back utility cupboard set back from the kitchen area
- Full range of integrated appliances to the kitchen with a built in breakfast bar full of natural light
- Spacious living room which is well decorated with a stunning front aspect over open farmland towards the Cheshire countryside
- Parquet style "Karndean" flooring to the ground floor, spacious downstairs cloaks/w/c
- Four good sized first floor bedrooms with the front bedrooms enjoying fine views, both with en-suite shower rooms, bedroom one enjoying a walk in wardrobe with further fitted wardrobes to beds 2 & 3
- Further pristine main family bathroom, large rear garden which is not directly overlooked
- NO CHAIN





**Ground Floor**  
**Approximate Floor Area**  
**843 sq. ft**  
**(78.31 sq. m)**



**First Floor**  
**Approximate Floor Area**  
**835 sq. ft**  
**(77.57 sq. m)**

Whilst every attempt has been made to ensure the accuracy of the floor plan contained here, measurements of doors, windows, rooms and any other items are approximate and no responsibility is taken for any error, omission, or mis-statement. The measurements should not be relied upon for valuation, transaction and/or funding purposes. This plan is for illustrative purposes only and should be used as such by any prospective purchaser or tenant. The services, systems and appliances shown have not been tested and no guarantee as to their operability or efficiency can be given.



## Currans Homes Sales

Currans Homes, 11 Grosvenor Street – CH1 2DD

01244 313900 • [sales@curranshomes.co.uk](mailto:sales@curranshomes.co.uk) • [curranshomes.co.uk/](http://curranshomes.co.uk/)