



5 Rushfield Road, Chester

In Excess of £450,000



5 Rushfield Road

Chester, Chester

5 Rushfield Road offers an excellent opportunity to acquire a four bedroom link detached home in a highly regarded location, where the appeal is very much centred on potential, space and postcode. This is a property that provides a strong foundation for modernisation and reconfiguration, allowing buyers to create a superb long term family home.

Council Tax band: E

Tenure: Freehold

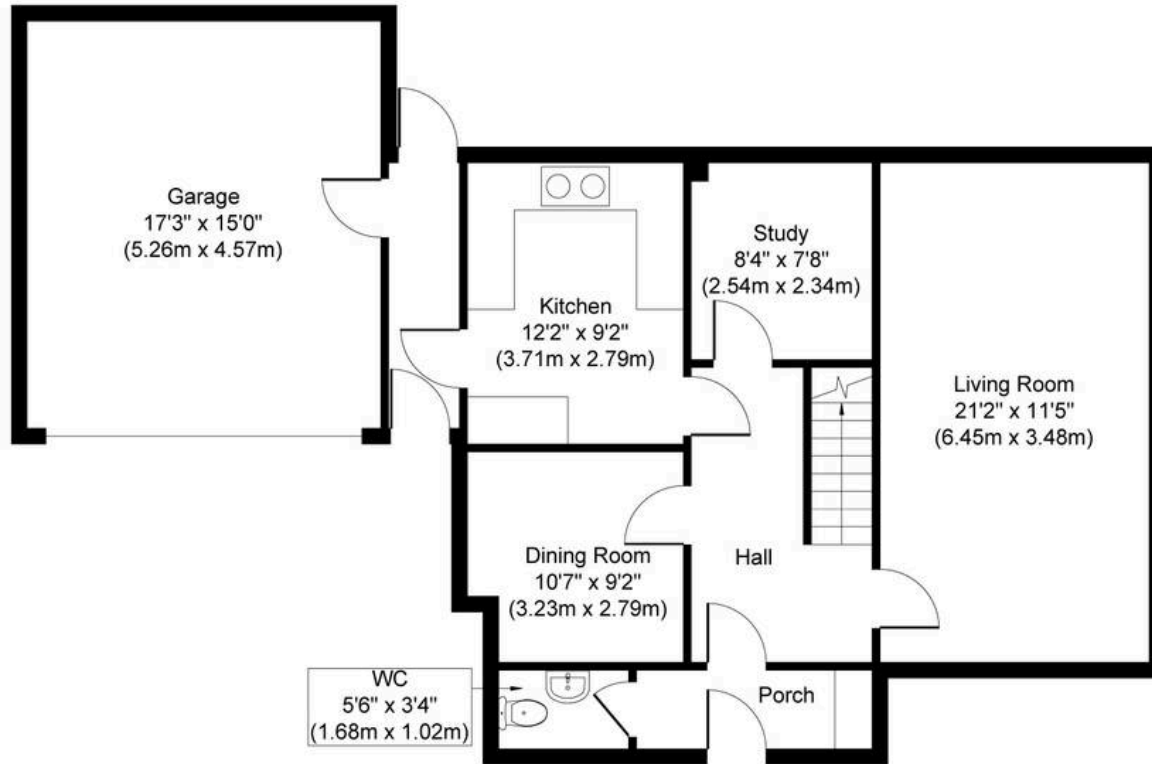
EPC Energy Efficiency Rating: D

EPC Environmental Impact Rating:

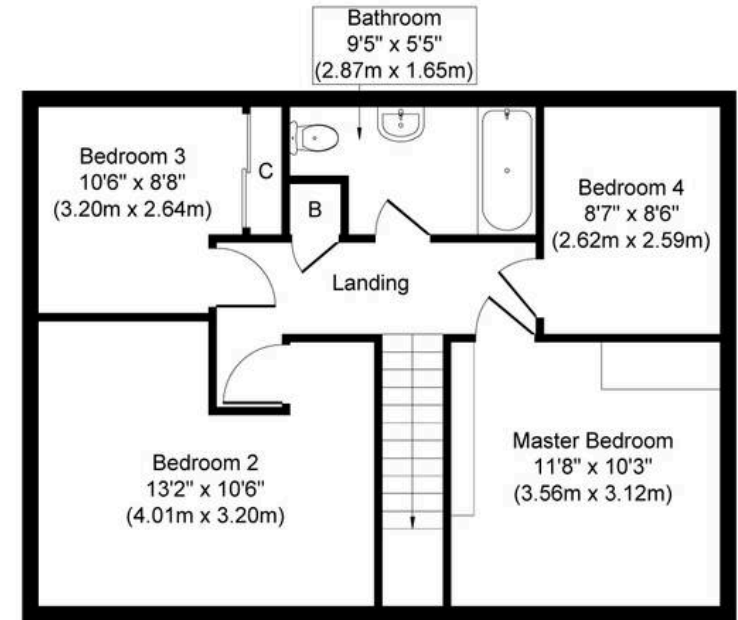
- Really sizable plot with a large rear garden and off road parking for plenty of vehicles.
- Link detached, with the link being from the double garage accessible from the front or side of the property.
- Living room the full length of the property with a large window and the front and sliding doors at the back, very bright room.
- Four bedrooms including two very large bedrooms at the front of the home.
- Wonderful potential modernise, extend or a plethora of different options.
- On the ever popular Rushfield Road a short walk to a good list of amenities including shops, hairdressers and cafe's.







Ground Floor
Approximate Floor Area
966 sq. ft
(89.74 sq. m)



First Floor
Approximate Floor Area
612 sq. ft
(56.85 sq. m)

Whilst every attempt has been made to ensure the accuracy of the floor plan contained here, measurements of doors, windows, rooms and any other items are approximate and no responsibility is taken for any error, omission, or mis-statement. The measurements should not be relied upon for valuation, transaction and/or funding purposes. This plan is for illustrative purposes only and should be used as such by any prospective purchaser or tenant. The services, systems and appliances shown have not been tested and no guarantee as to their operability or efficiency can be given.



Currans Unique Homes

Currans Homes, 11 Grosvenor Street - CH1 2DD

01244 313900 • sales@curransunique.co.uk • curransunique.co.uk/