



74 Beeston View, Chester  
£240,000



## 74 Beeston View

Chester, Chester

Situated in the ever-popular village of Handbridge, this charming two-bedroom end-terrace home enjoys an enviable position on Beeston View with stunning open outlooks towards the Beeston and Peckforton Hills.

Council Tax band: TBD

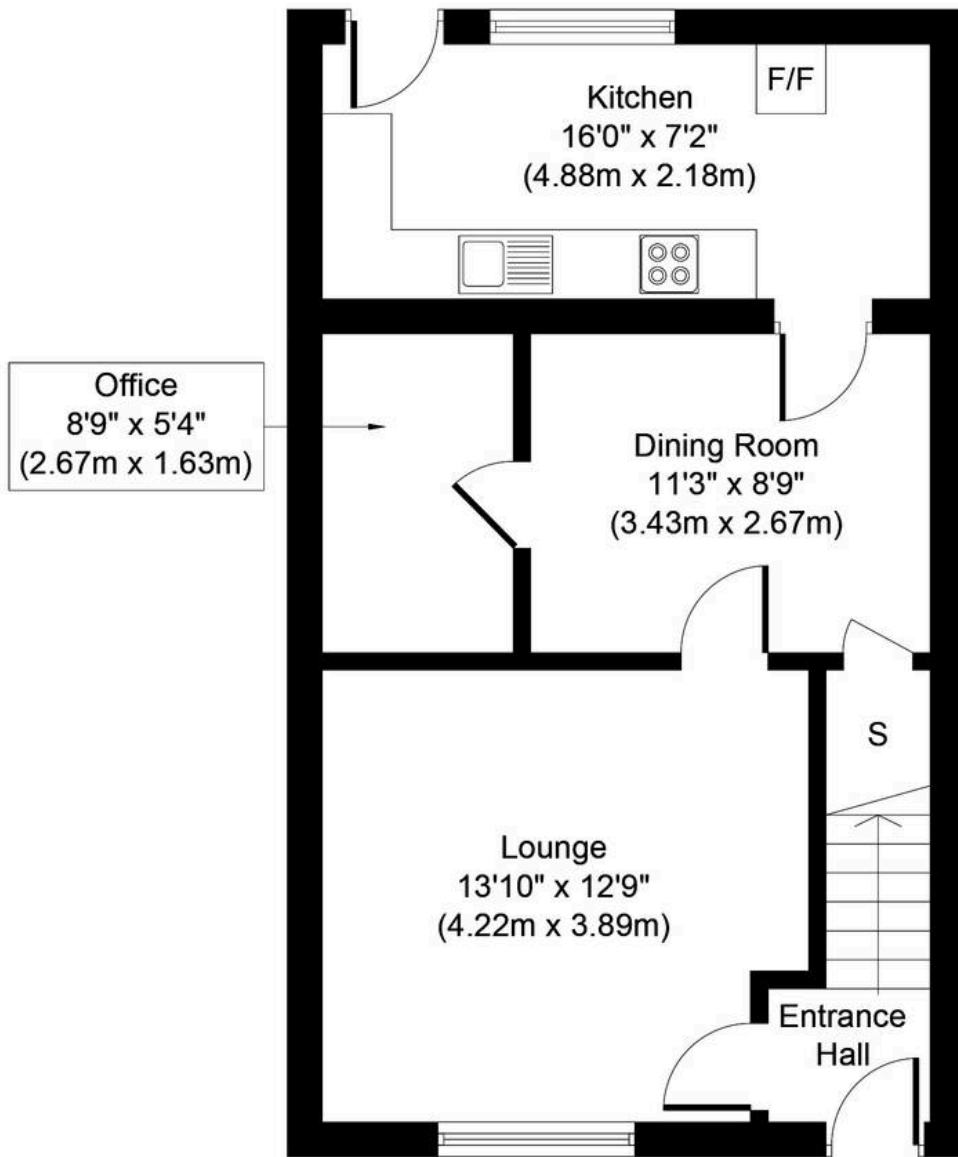
EPC Energy Efficiency Rating: D

EPC Environmental Impact Rating:

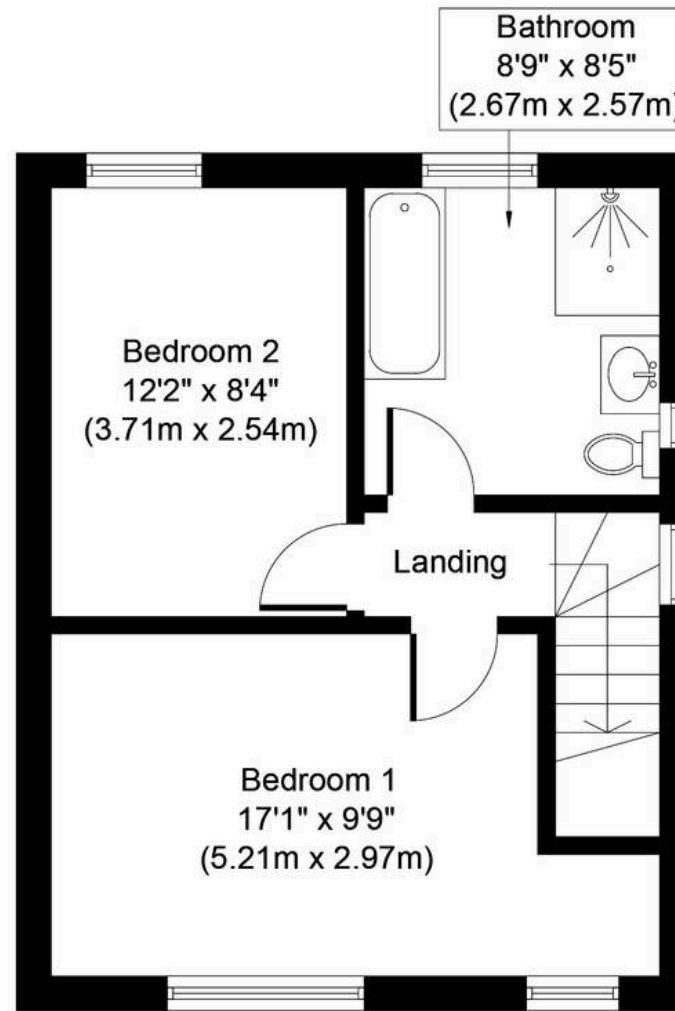
- Stunning views over the Sandstone Trail including the historic castles of Beeston and Peckforton.
- Two really good sized double bedrooms including a really large master bedroom with far reaching views.
- Log burner right in the heart of the living room creating a lovely cosy atmosphere.
- Extended to allow for a large kitchen to the rear of the property.
- Off road parking for 2 cars on the driveway.
- End of Terrace with a green space next to the home.







**Ground Floor**  
**Approximate Floor Area**  
**525 Sq. ft.**  
**(48.8 Sq. m.)**



**First Floor**  
**Approximate Floor Area**  
**384 Sq. ft.**  
**(35.7 Sq. m.)**

Whilst every attempt has been made to ensure the accuracy of the floor plan contained here, measurements of doors, windows, rooms and any other items are approximate and no responsibility is taken for any error, omission, or mis-statement. This plan is for illustrative purposes only and should be used as such by any prospective purchaser or tenant. The services, systems and appliances shown have not been tested and no guarantee as to their operability or efficiency can be given.



## Currans Homes Sales

Currans Homes, 11 Grosvenor Street - CH1 2DD

01244 313900 • [sales@curranshomes.co.uk](mailto:sales@curranshomes.co.uk) • [curranshomes.co.uk/](http://curranshomes.co.uk/)