



16 Vernon Close, Saughall

In Excess of £360,000



16 Vernon Close

Saughall, Chester

Vernon Close is a well presented family home tucked away within a quiet and sought after cul de sac in the popular village of Saughall. Offering generous and flexible accommodation throughout, the property is ideally suited to modern family living and enjoys a pleasant outlook.

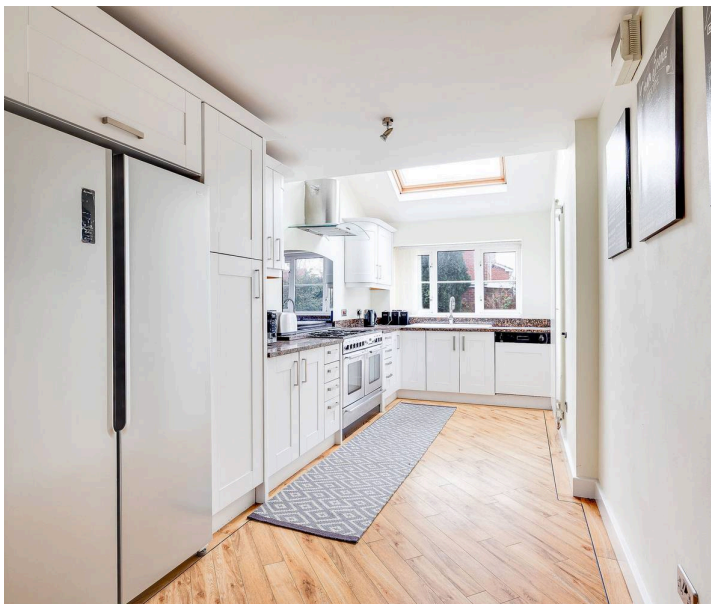
Council Tax band: E

Tenure: Freehold

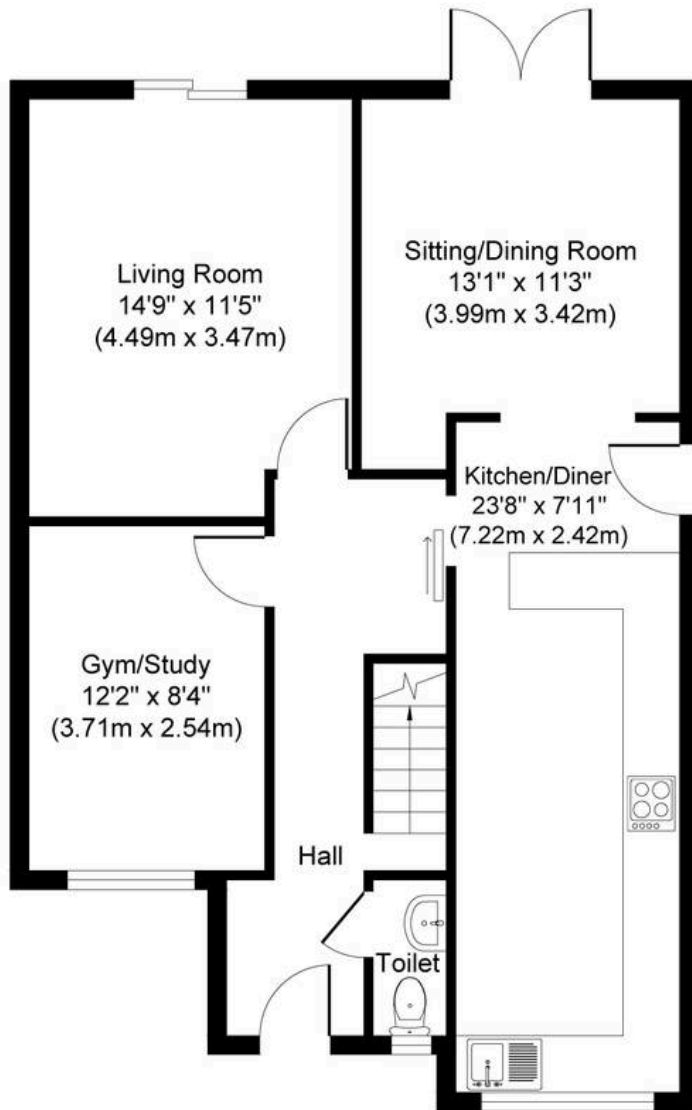
EPC Energy Efficiency Rating: C

EPC Environmental Impact Rating: C

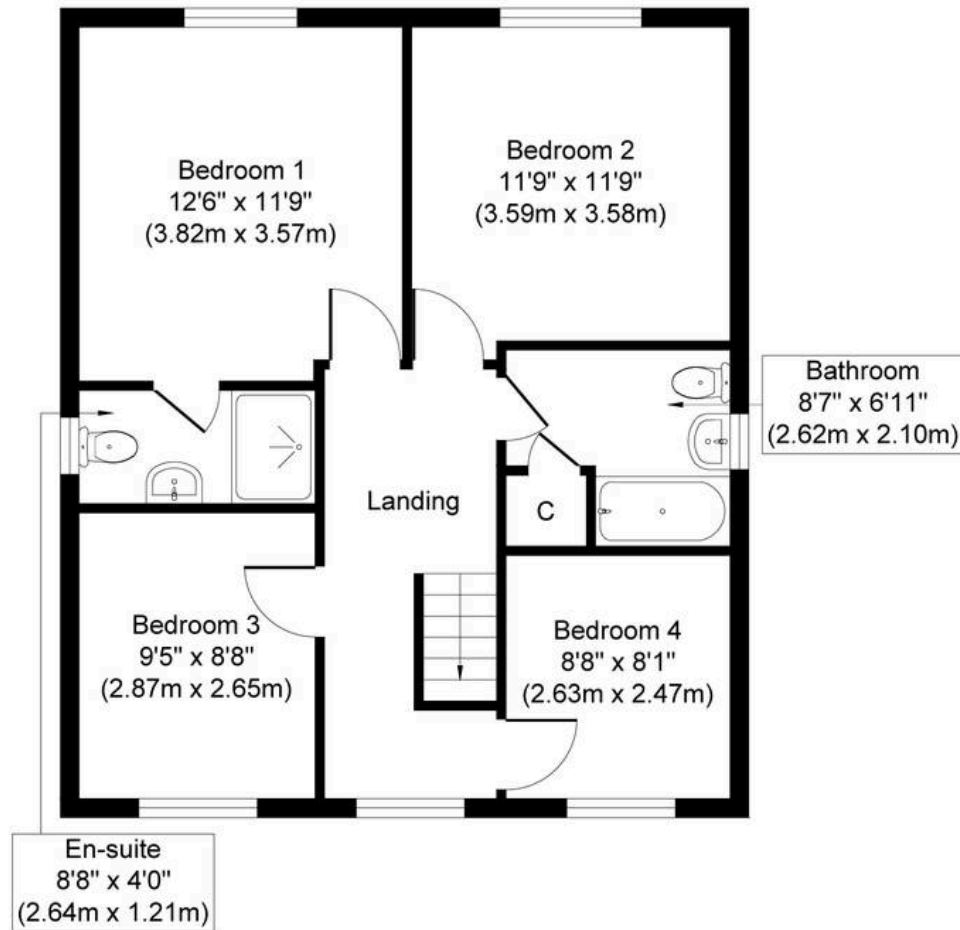
- Four good sized double bedrooms with the master bedroom including an en-suite.
- Spacious off road parking on the drive allowing for several cars to park.
- Numerous reception rooms allowing for multiple different uses from a living room to a dining room or even a gym.
- Set in the well loved village of Saughall with plenty of amenities a short stroll away.
- Lean to shed build to the rear side of the property allowing for great storage space.
- Secure, low maintenance, rear garden.
- NO CHAIN.







Ground Floor
Approximate Floor Area
736 sq. ft
(68.37 sq. m)



First Floor
Approximate Floor Area
627 sq. ft
(58.25 sq. m)

Whilst every attempt has been made to ensure the accuracy of the floor plan contained here, measurements of doors, windows, rooms and any other items are approximate and no responsibility is taken for any error, omission, or mis-statement. The measurements should not be relied upon for valuation, transaction and/or funding purposes. This plan is for illustrative purposes only and should be used as such by any prospective purchaser or tenant. The services, systems and appliances shown have not been tested and no guarantee as to their operability or efficiency can be given.



Currans Homes Sales

Currans Homes, 11 Grosvenor Street - CH1 2DD

01244 313900 • sales@curranshomes.co.uk • curranshomes.co.uk/