



Norwood, Bretton Lane  
£280,000





## Norwood

Bretton Lane, Chester

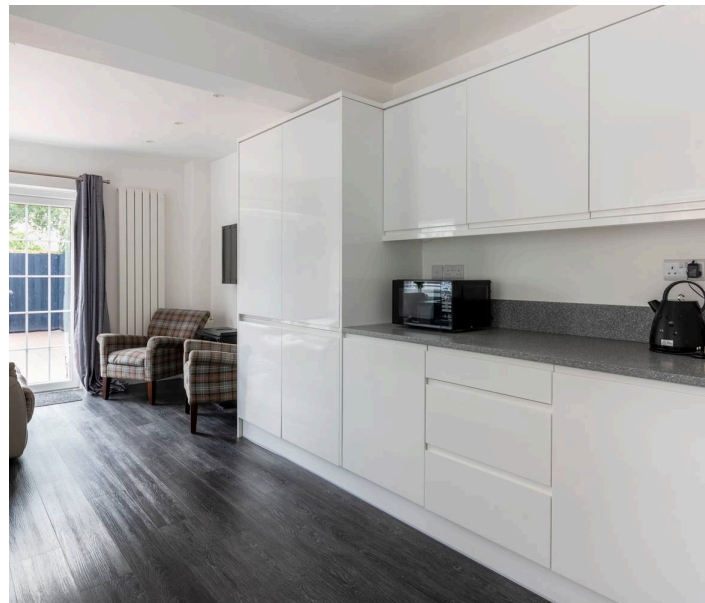
Council Tax band: D

Tenure: Freehold

EPC Energy Efficiency Rating: D

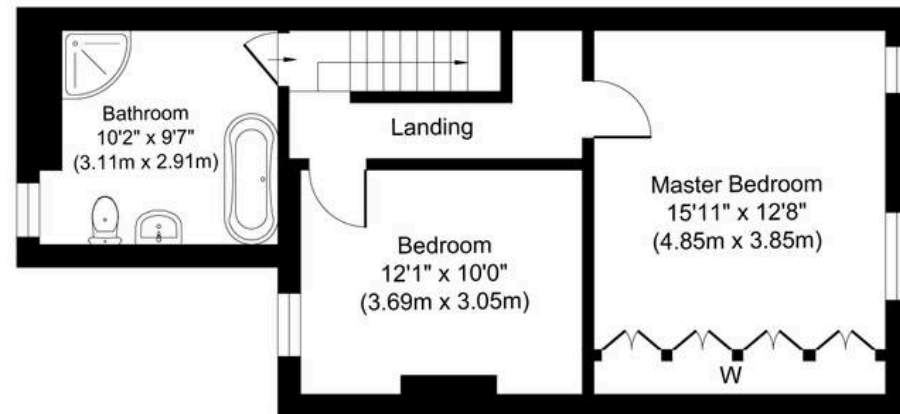
EPC Environmental Impact Rating: D

- Two large double bedrooms with a very large master bedroom.
- External garage that has been part converted to create a home office, perfect for working from home.
- Great transport links, to Chester, Manchester and North Wales
- Low maintenance garden with external storage.
- Large, modern and light kitchen.
- Separate dining room and living room.

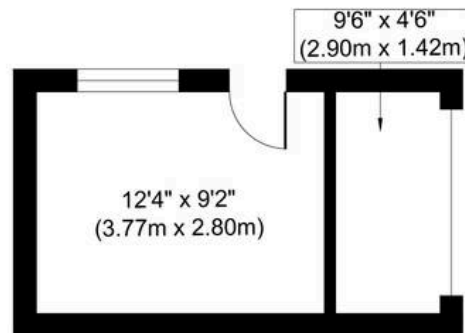




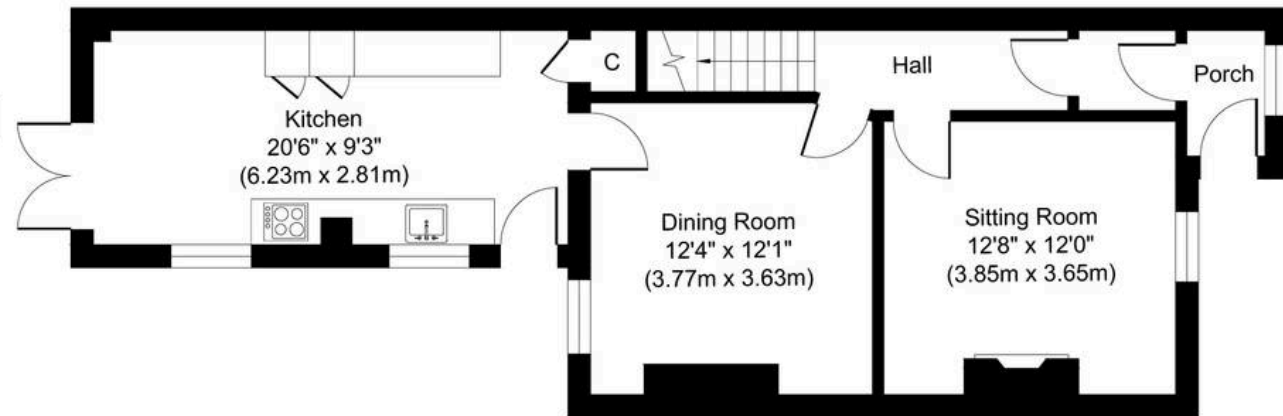




**First Floor**  
**Approximate Floor Area**  
**499 sq. ft**  
**(46.33 sq. m)**



**Outbuilding**  
**Approximate Floor Area**  
**166 sq. ft**  
**(15.41 sq. m)**



**Ground Floor**  
**Approximate Floor Area**  
**613 sq. ft**  
**(56.98 sq. m)**

Whilst every attempt has been made to ensure the accuracy of the floor plan contained here, measurements of doors, windows, rooms and any other items are approximate and no responsibility is taken for any error, omission, or mis-statement. The measurements should not be relied upon for valuation, transaction and/or funding purposes. This plan is for illustrative purposes only and should be used as such by any prospective purchaser or tenant.

The services, systems and appliances shown have not been tested and no guarantee as to their operability or efficiency can be given.





## Currans Homes Sales

Currans Homes, 11 Grosvenor Street – CH1 2DD

01244 313900 • [sales@curranshomes.co.uk](mailto:sales@curranshomes.co.uk) • [curranshomes.co.uk/](http://curranshomes.co.uk/)