



48 Milton Street, Chester  
£190,000



## 48 Milton Street

Chester, Chester

48 Milton Street is a three-storey townhouse situated just on the edge of Chester city centre—literally moments from the high street and directly next to the Mill Hotel, giving you immediate access to local restaurants, gym facilities, and the canal. Permit parking is available for residents, making it convenient despite the central location.

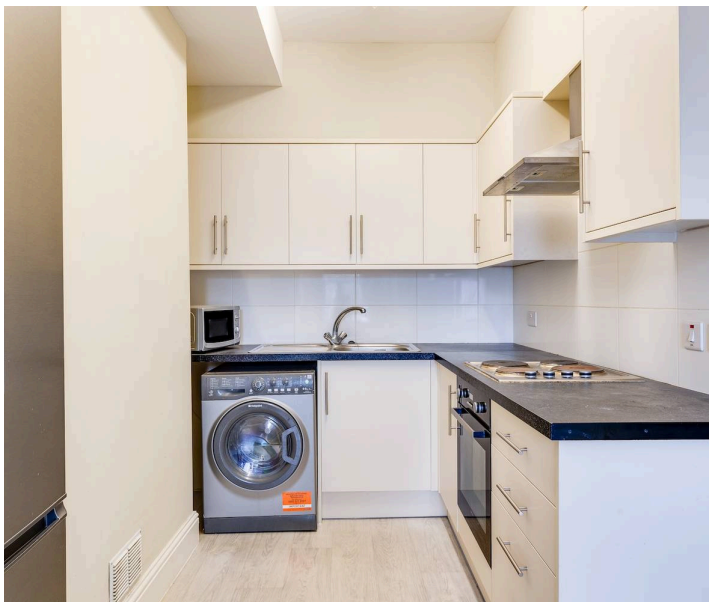
Council Tax band: B

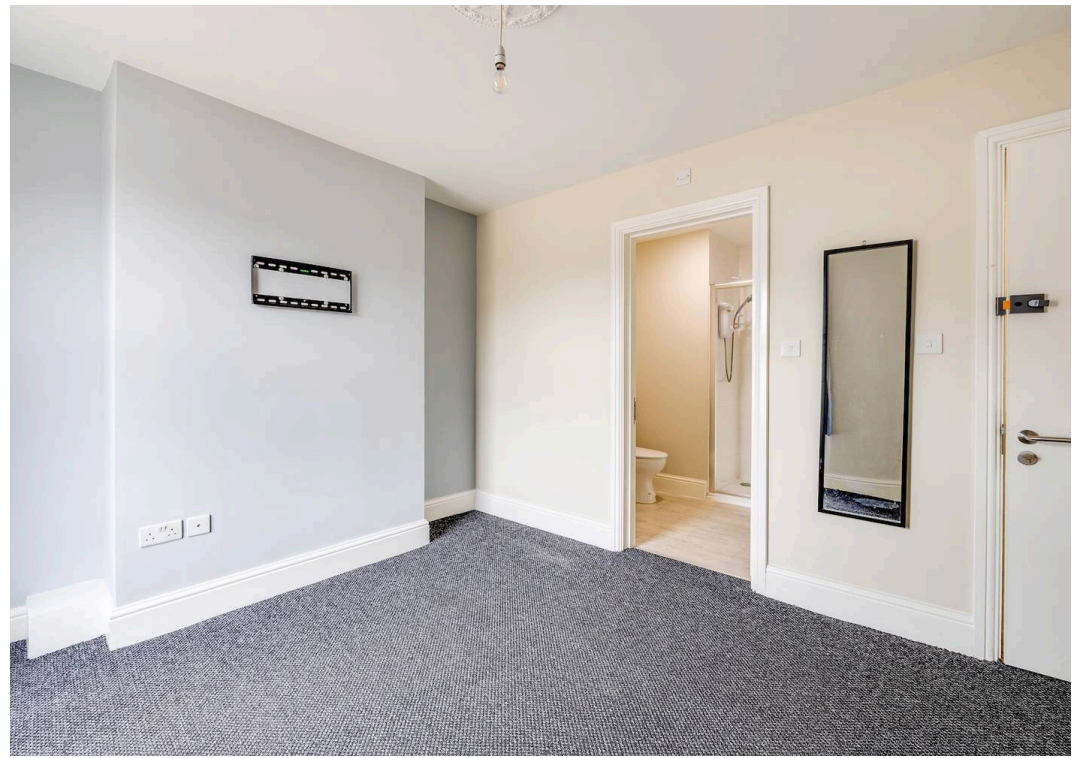
Tenure: Freehold

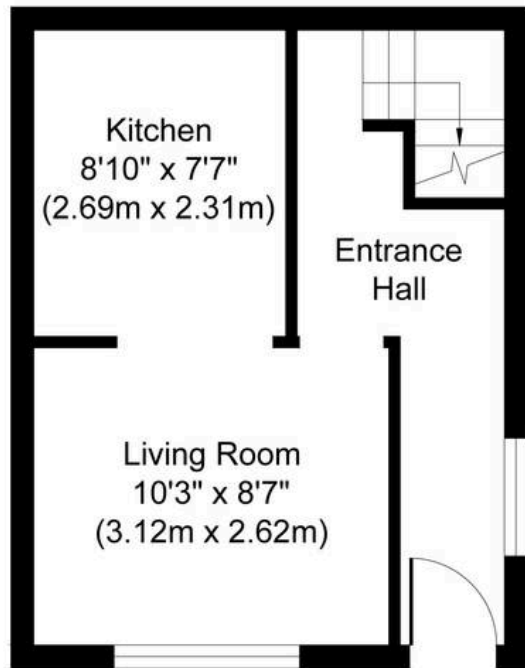
EPC Energy Efficiency Rating: D

EPC Environmental Impact Rating:

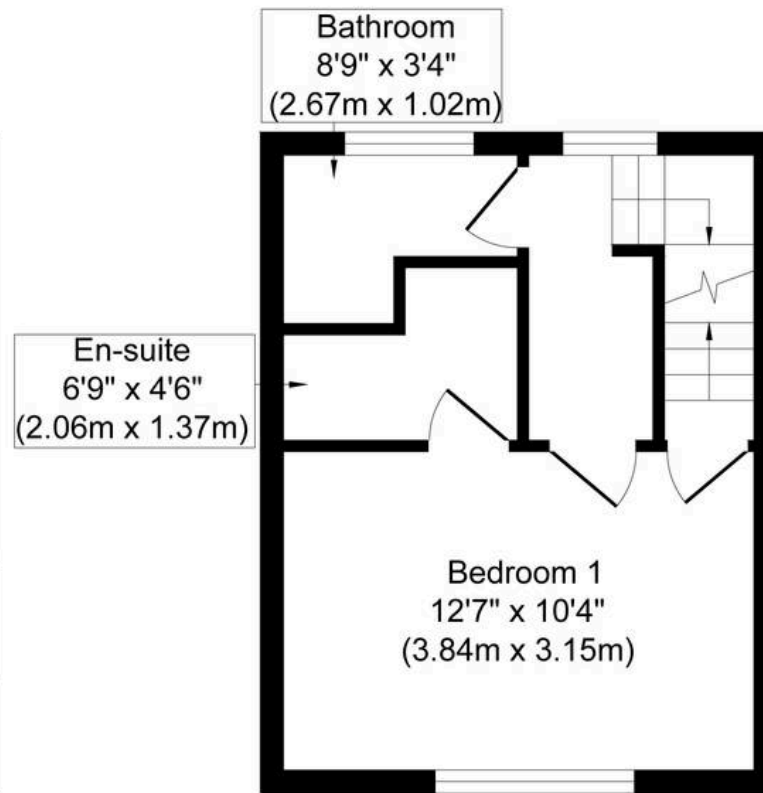
- Three story town house which is currently an investment property with two double bedrooms with two shower rooms
- Could easily be converted into a two double bed roomed end terrace with potential to open up the entrance hall/living/kitchen
- The property has the benefit of being re-roofed in recent years
- UPVC double glazed windows and gas fired central heating



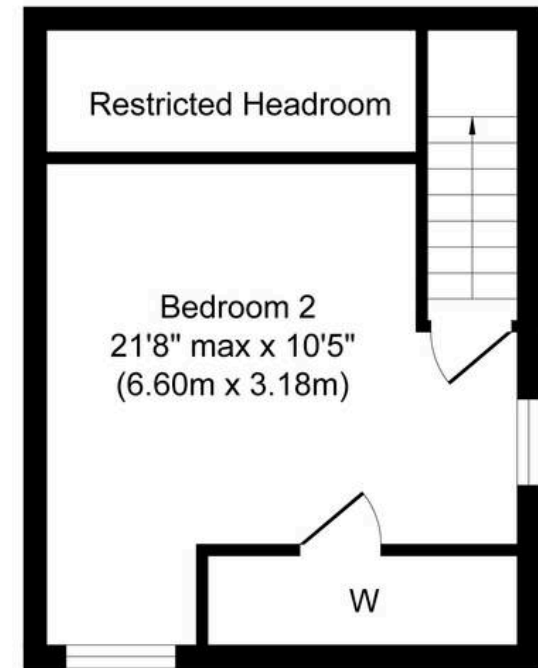




**Ground Floor**  
**Approximate Floor Area**  
**241 sq. ft**  
**(22.38 sq. m)**



**First Floor**  
**Approximate Floor Area**  
**241 sq. ft**  
**(22.38 sq. m)**



**Second Floor**  
**Approximate Floor Area**  
**241 sq. ft**  
**(22.38 sq. m)**

Whilst every attempt has been made to ensure the accuracy of the floor plan contained here, measurements of doors, windows, rooms and any other items are approximate and no responsibility is taken for any error, omission, or mis-statement. The measurements should not be relied upon for valuation, transaction and/or funding purposes. This plan is for illustrative purposes only and should be used as such by any prospective purchaser or tenant. The services, systems and appliances shown have not been tested and no guarantee as to their operability or efficiency can be given.



## Currans Homes Sales

Currans Homes, 11 Grosvenor Street - CH1 2DD

01244 313900 • [sales@curranshomes.co.uk](mailto:sales@curranshomes.co.uk) • [curranshomes.co.uk/](http://curranshomes.co.uk/)