



1 New Houses Gwysaney, Rhosesmor

Offers Over £350,000



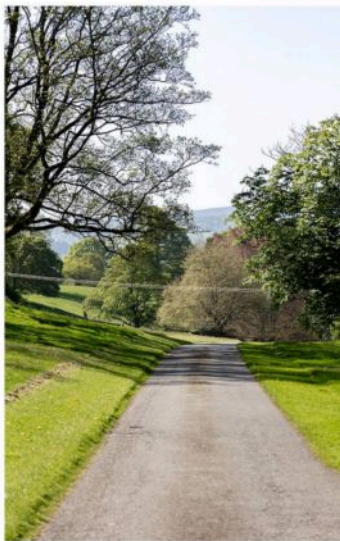
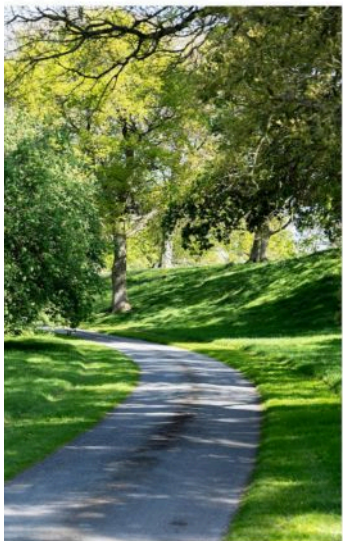


1 New Houses Gwysaney

Mold

Welcome to One New Houses — a charming and rarely available three-bedroom home set within the beautifully tranquil grounds of Gwysaney Hall. With panoramic views of the Welsh hills and surrounded by sweeping countryside and ancient woodland, this property offers a lifestyle that feels worlds away from the bustle, while still being just a short drive from Mold and its excellent amenities.

Set within a unique parkland setting, the property is accessed via an impressive private driveway leading to Gwysanwy Hall, and is surrounded by stunning open countryside with far-reaching southerly views.





1 New Houses Gwysaney

Mold

The home is perfectly positioned within the estate, with a private seating area tucked just to the front – ideal for enjoying peaceful mornings or summer evenings. Stepping inside, you're greeted by a welcoming entrance hallway, where the original parquet flooring immediately sets the tone for a home filled with warmth and character.

To the right, the living room frames breath taking views of the surrounding countryside, offering a serene backdrop whether you're relaxing with a book or entertaining guests. Clever built-in storage adds practical touches without compromising on style. Flowing from here is the kitchen and dining area, a sociable space complete with integrated appliances and a striking log burner at its heart – perfect for cosy evenings in. Just off the kitchen, a convenient WC and a separate utility area help keep the day-to-day running smoothly.





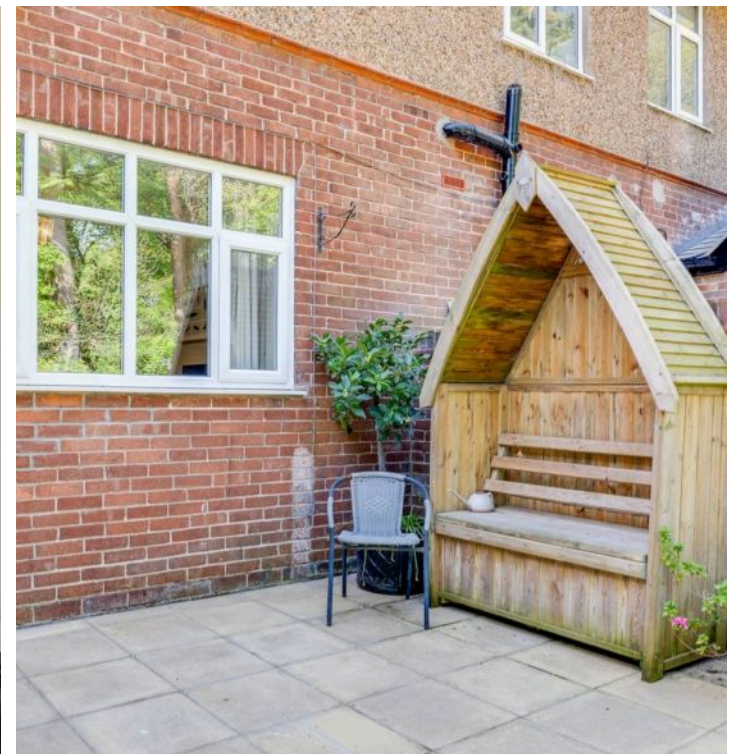
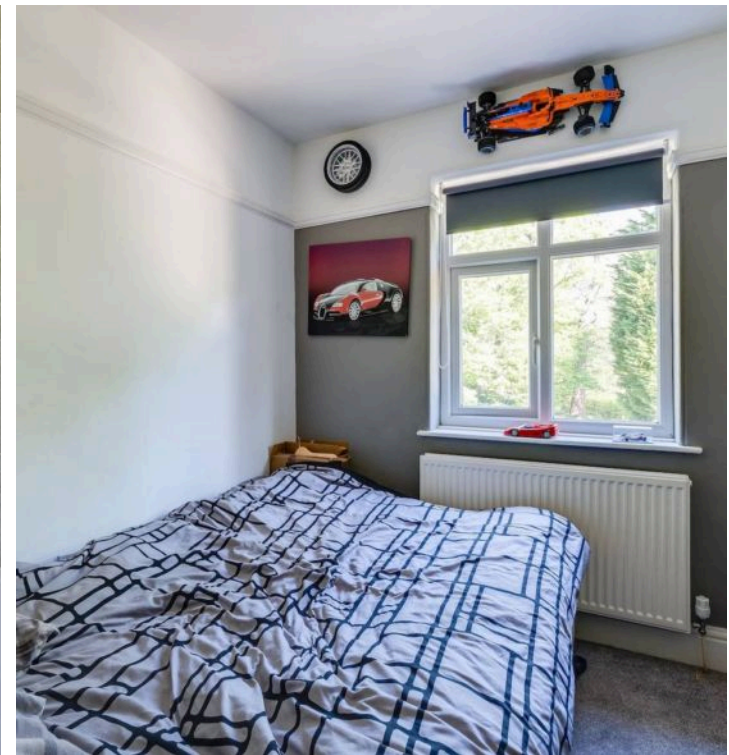
1 New Houses Gwysaney

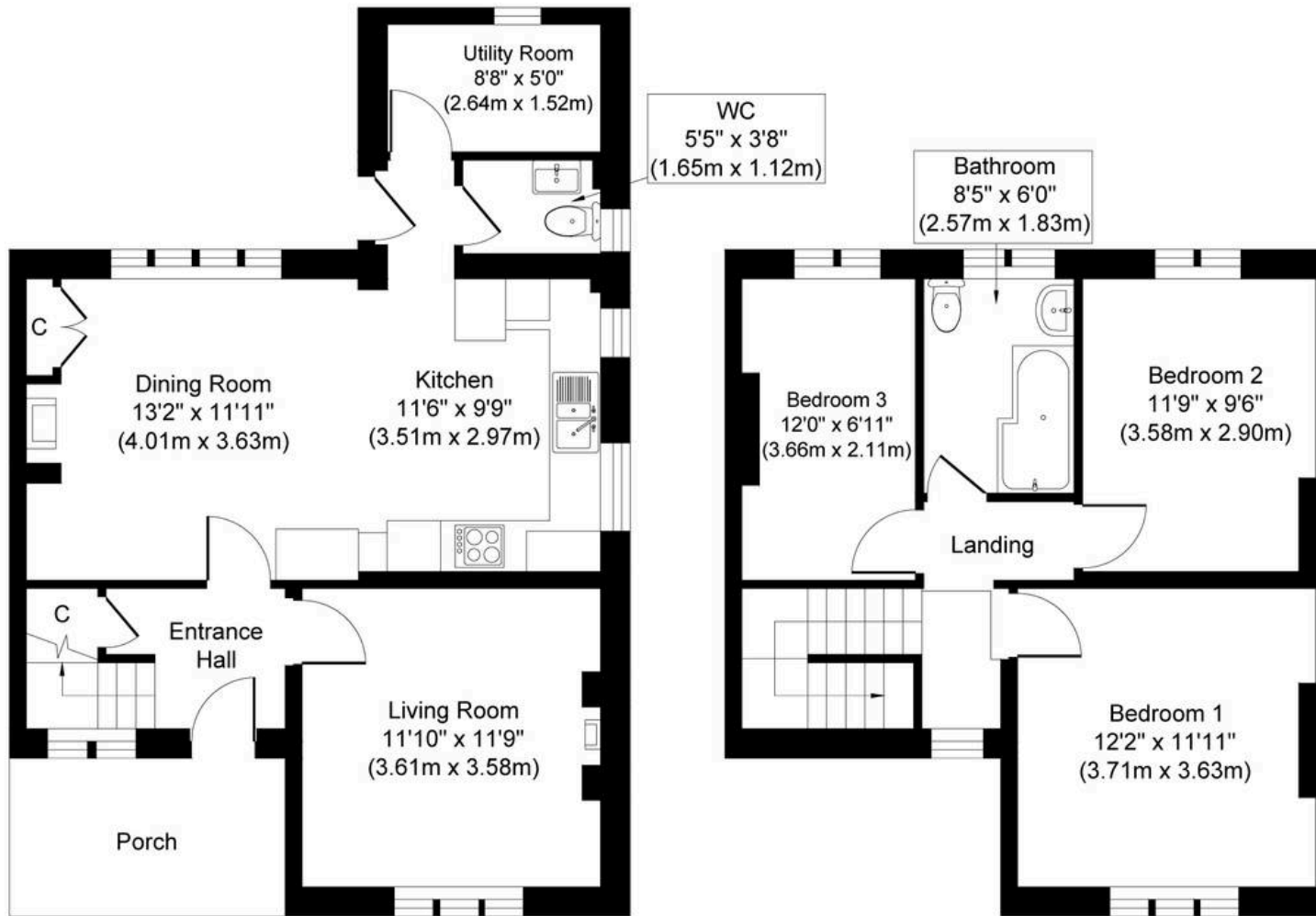
Mold

Outside, the rear garden provides a private outdoor retreat with steps leading down to a generous parking area and a garage, ensuring there's ample space for vehicles or storage.

Upstairs, the main bedroom enjoys uninterrupted front-facing views of the Welsh hills – a truly special way to start each day. There's a well-proportioned second double room, a bright and airy third bedroom, and a modern family bathroom that completes the layout.

Homes in settings like this are rarely available – combining character, comfort, and countryside seclusion with access to nearby Mold and beyond.





Floor 1
Approximate Floor Area
635 sq. ft
(58.99 sq. m)

Floor 2
Approximate Floor Area
490 sq. ft
(45.52 sq. m)

Whilst every attempt has been made to ensure the accuracy of the floor plan contained here, measurements of doors, windows, rooms and any other items are approximate and no responsibility is taken for any error, omission, or mis-statement. The measurements should not be relied upon for valuation, transaction and/or funding purposes. This plan is for illustrative purposes only and should be used as such by any prospective purchaser or tenant. The services, systems and appliances shown have not been tested and no guarantee as to their operability or efficiency can be given.



Currans North Wales

Oakfield Property, 13-17 Brunswick Court Brunswick Road - CH7 2ED

01244 548182 • salesnw@curranshomes.co.uk • <http://www.curranshomes.co.uk>