



4 Kingfisher Close, Saughton

In Excess of £800,000



## 4 Kingfisher Close

Saighton, Chester

Situated towards the rear of the highly regarded Crown Park development in Huntington, 4 Kingfisher Close occupies a prime and exclusive position within one of the earliest and most desirable phases of the estate. Set on a generous corner plot, this impressive five bedroom detached family home has been meticulously maintained and improved in recent years and is presented in immaculate, move in ready condition throughout.

Council Tax band: G

Tenure: Freehold

EPC Energy Efficiency Rating: B

EPC Environmental Impact Rating:





## 4 Kingfisher Close

Saighton, Chester

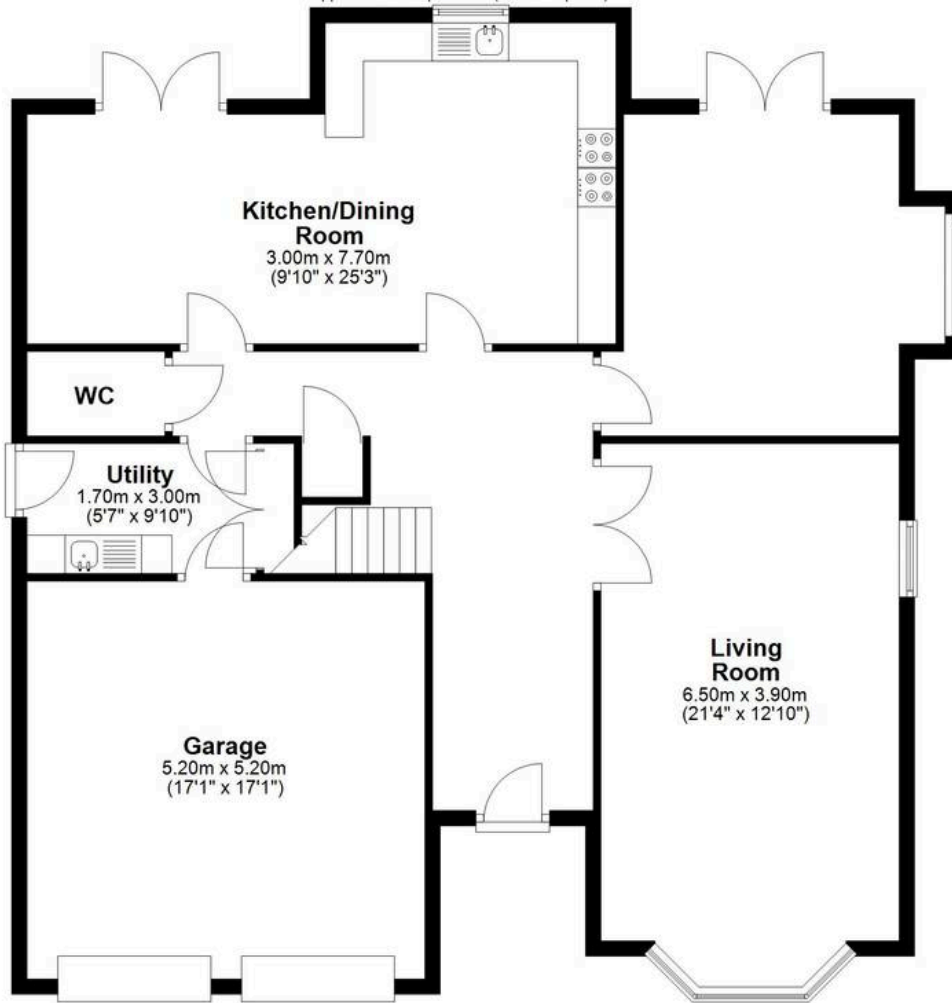
- Large detached double fronted family home tucked away well on a corner plot with a well established and mature walled rear garden
- Property offered to market in immaculate condition having been superbly maintained, improved in ready to move into accommodation
- Five large double bedrooms with two large master suites both with built in wardrobes and large en-suites
- Impressive entrance hall with double doors leading to a large bay fronted living room, separate good sized dining with French doors onto one of the rear patio's
- Stunning sized open plan living/dining/kitchen with further UPVC French doors onto the rear patio
- Utility room, downstairs cloaks/w/c, large double garage with double remote operated doors, plastered with flooring to make an ideal gym
- Five large first floor bedrooms with built in plantation blinds, family bathroom with a modern white suite
- Four car front double width driveway, corner plot with pristine lawns to the front and side, walled rear garden which is well established and benefits from a sunny aspect
- UPVC double glazed windows and doors, upgraded central heating boiler within recent years, large well proportioned rooms throughout
- NO CHAIN





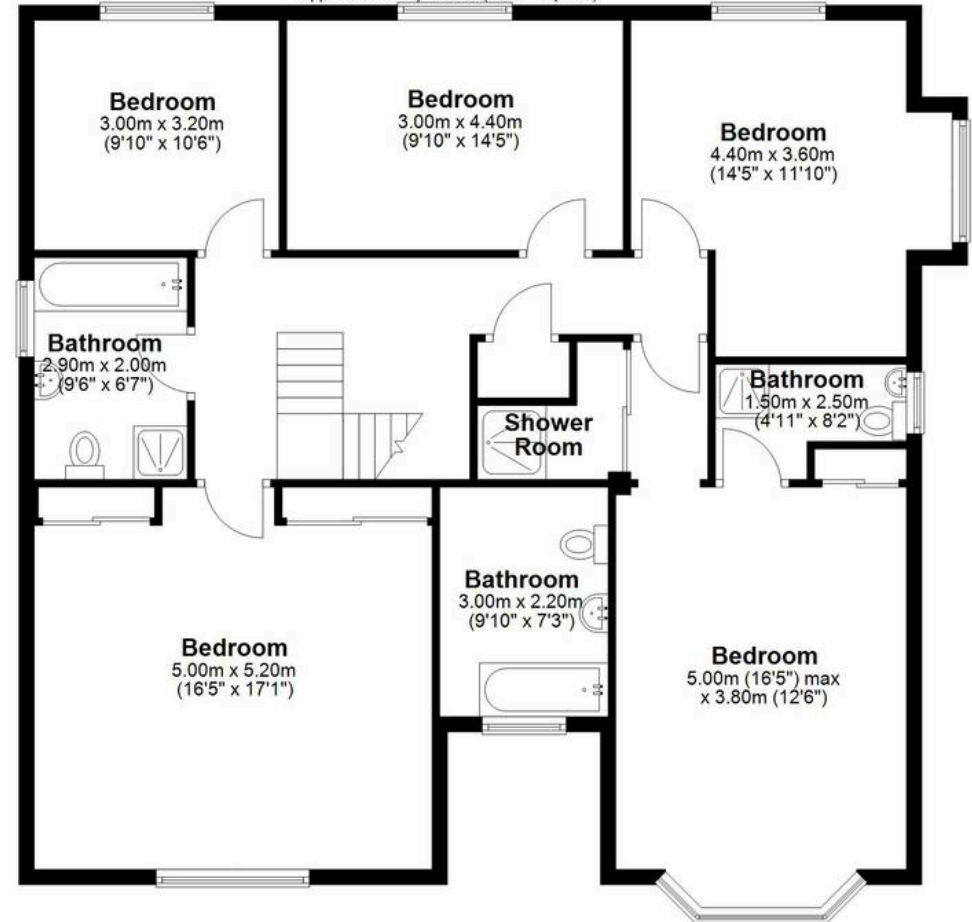
### Ground Floor

Approx. 127.9 sq. metres (1376.7 sq. feet)



### First Floor

Approx. 120.5 sq. metres (1296.7 sq. feet)



Total area: approx. 248.4 sq. metres (2673.4 sq. feet)



## Currans Homes Sales

Currans Homes, 11 Grosvenor Street - CH1 2DD

01244 313900 • [sales@curranshomes.co.uk](mailto:sales@curranshomes.co.uk) • [curranshomes.co.uk/](http://curranshomes.co.uk/)